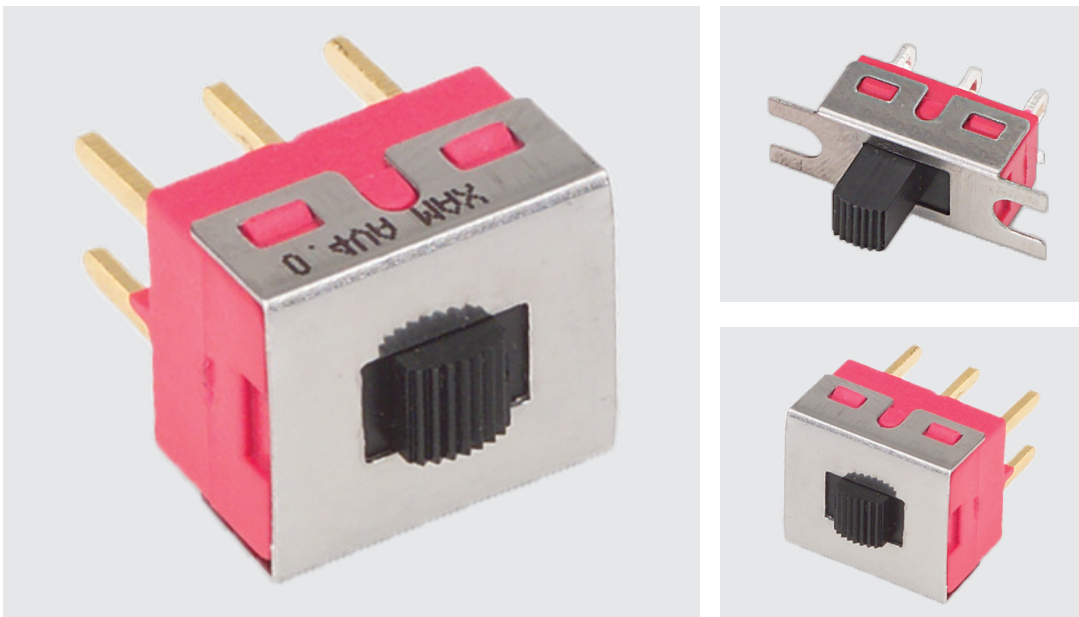


4M-SERIES

4M-Series

MINIATURE SLIDE SWITCHES

The 4M-Series miniature slide switches offer a variety of ratings, circuits, contact materials, and terminal platings. With 14 termination choices and 8 actuator styles, this versatile switch adapts to a variety of applications, and is able to withstand temperatures from -30°C to +85°C.



Product Highlights:

- Two or Three Position Circuitry
- 125/250VAC or up to 28VDC
- Available in Silver, Gold or Tin Plating
- Supplied in Bulk or Tape Reel
- UL and CSA Approvals Available

Typical Applications:

- Consumer Electronics
- Instrumentation
- Computer Servers / Peripherals
- Test / Measurement



Carling Technologies®
Innovative Designs. Powerful Solutions.

Techna

www.techna.co.uk

Electrical

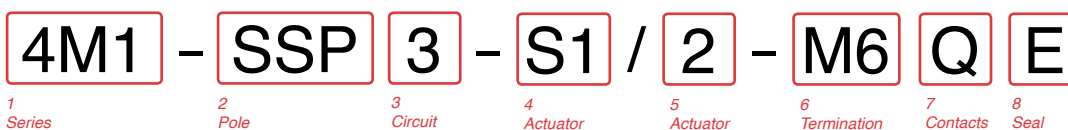
Contact Rating	refer to ordering scheme
Electrical Life	30,000 make & break cycles @ full load
Contact Resistance	10 mΩ max. initial @ 2-4 VDC 100mA for both silver & gold plated contacts
Insulation Resistance	1000 MΩ min.
Dielectric Strength	1500 Volts RMS @ sea level

Physical

Operating Temperature	-30°C to +85°C
Solder Heat Resistance	MIL-STD-202, Method 210

Material

Case	Diallyl phthalate (DAP) (UL 94V-0)
Slide Handle	Nylon
Housing	Stainless Steel
Terminal Seal	Epoxy



1 SERIES
4M1 Miniature Slide Switch

2 POLES
SSP Single Pole SDP Double Pole

3 CIRCUIT
() - momentary
Switching Position:
1 2 3
1 2-1, 5-4 Connected Terminals 2-3, 5,6
3 ON NONE ON
ON OFF ON

4 ACTUATOR
S1 .201" height S5 .053" height (for DPDT only)
S2 .301" height S6 .488" height
S3 .370" height S7 .311" height
S4 .140" height T1 .209" height (for DPDT only)

5 ACTUATOR COLORS
1 White 6 Green
2 Black 7 Blue
3 Red 8 Brown
4 Orange 9 Gray
5 Yellow

6 TERMINATION	M61 Snap-In, 90°
M1 Solder Lug	M7 PC Mount, 90° vertical
M2 PCB	M71 Snap-In, 90°
M3 Quick Connect	VS2 PC Mount, U bracket, .350 height
M51 Wire Wrap .750	VS3 PC Mount, U bracket, .575 height
M52 Wire Wrap .964	N1 Solder Lug without mounting tabs
M53 Wire Wrap .425	
M54 Wire Wrap 1.062	
M6 PC Mount, 90° horizontal	

7 CONTACTS / TERMINALS
Contact Material Terminal Plating Rating Approvals
G silver ¹ gold over silver 5A 125VAC or 28VDC 2A 250VAC
K gold ² tin ^{3,5} 0.4VA max 20V max (AC/DC) N/A
P silver ¹ tin ^{3,5} 5A 125VAC or 28VDC 2A 250VAC
Q silver ¹ silver ¹ 5A 125VAC or 28VDC 2A 250VAC
R gold ² gold ² 0.4VA max 20V max (AC/DC) N/A

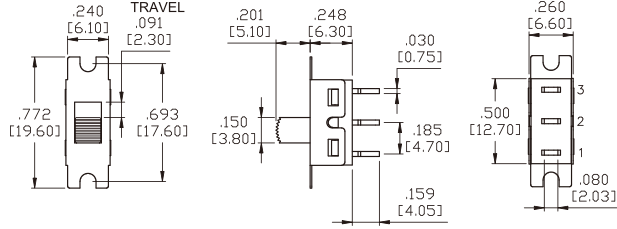
8 EPOXY SEAL
E Epoxy Seal 0 without Epoxy Seal

- Notes:
- Movable contact & terminal platings: silver over copper alloy
 - Movable contact & terminal platings: gold over nickel over copper alloy
 - Terminals platings: tin over nickel over copper alloy, available with PC terminations only
 - Non-Black, white and red colors require a minimum order of 2500 pieces
 - Tin option available with PC type terminations only

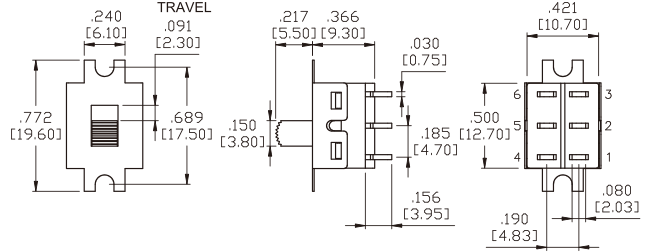
*Manufacturer reserves the right to change product specification without prior notice.

4M1-Series Dimensional Specifications: in. [mm]

Single Pole



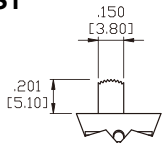
Double Pole



Actuator Options

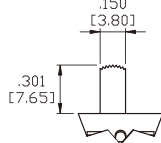
* All actuator length shown is SPDT model with M1 and M2 terminals.

S1



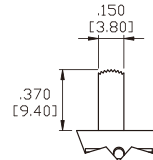
* Add 0.40 (.016) from actuator height for DPDT-M1 and M2 model.

S2



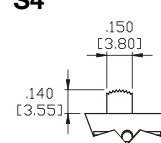
* Add 0.20 (.008) from actuator height for DPDT-M1 and M2 model.

S3



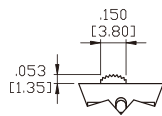
* Add 0.30 (.012) from actuator height for DPDT-M1 and M2 model.

S4

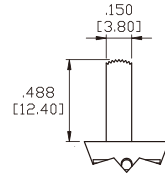


* Add 0.40 (.016) from actuator height for DPDT-M1 and M2 model.

S5

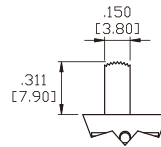


S6



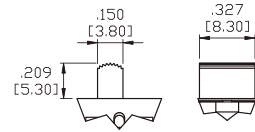
* Add 0.70 (.028) from actuator height for DPDT-M1 and M2 model.

S7



* Add 0.40 (.016) from actuator height for DPDT model.

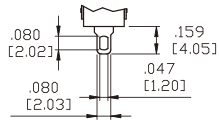
T1 for DPDT only



4M1-Series Dimensional Specifications: in. [mm]

Termination Options

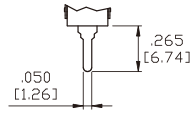
M1 Standard Solder Lug



THK .030 [0.75]

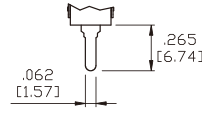
* Standard with Mounting Tabs.

M2 PC Thru-Hole



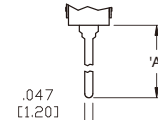
THK .030 [0.75]

M3 Quick Connect



THK .030 [0.75]

M5 Wire Wrap

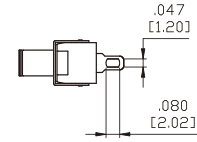
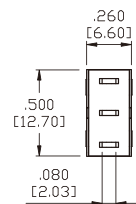
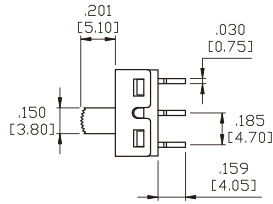
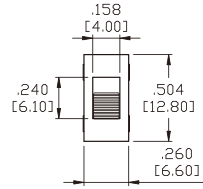


THK .030 [0.75]

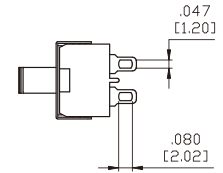
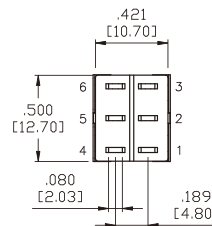
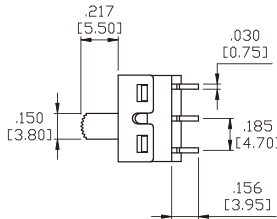
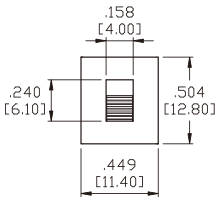
OPTION CODE	DIM.'A'
M5-1	.750 [19.05]
M5-2	.964 [24.48]
M5-3	.425 [10.80]
M5-4	1.062 [26.97]

Termination Options without Mounting Tabs

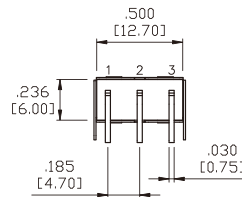
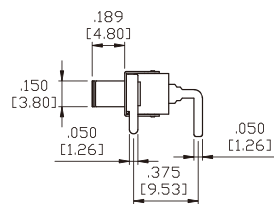
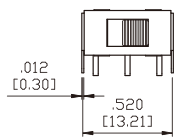
N1 Single Pole



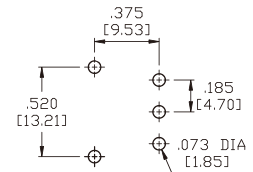
N1 Double Pole



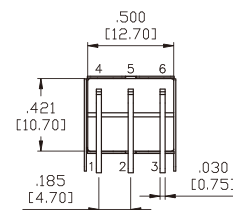
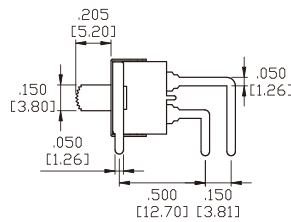
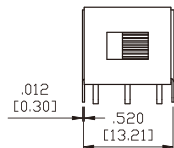
M6 Single Pole



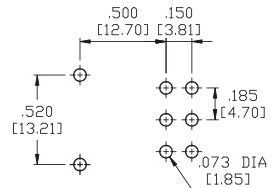
P.C.MOUNTING



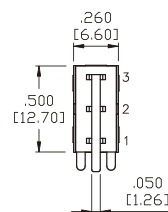
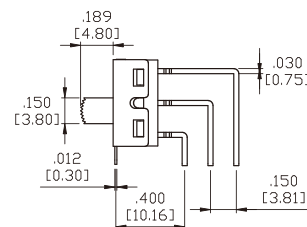
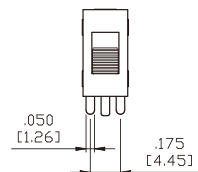
M6 Double Pole



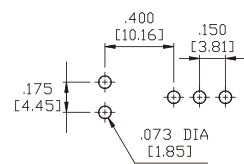
P.C.MOUNTING



M7 Single Pole



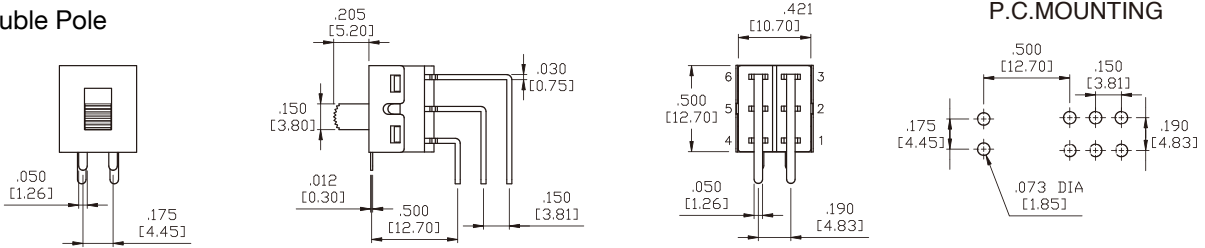
P.C.MOUNTING



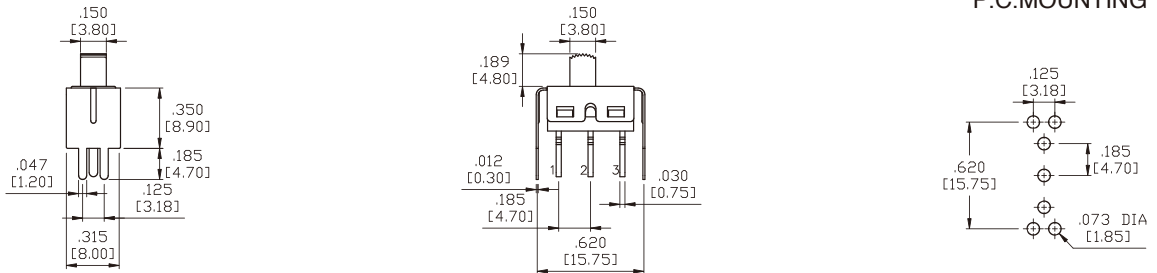
4M1-Series Dimensional Specifications: in. [mm]

Termination Options

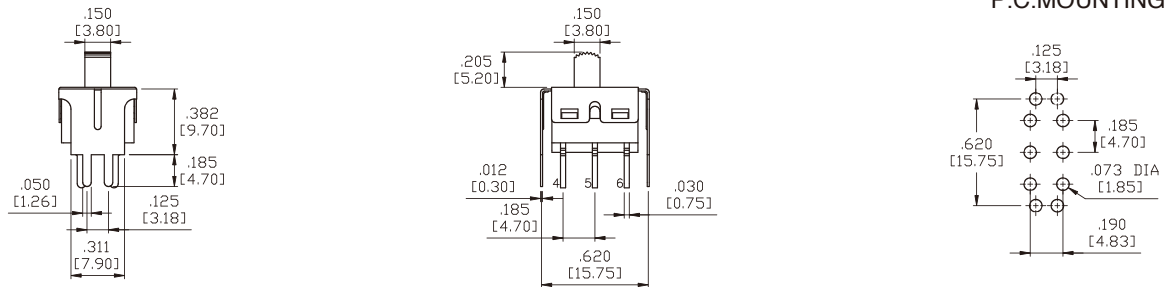
M7 Double Pole



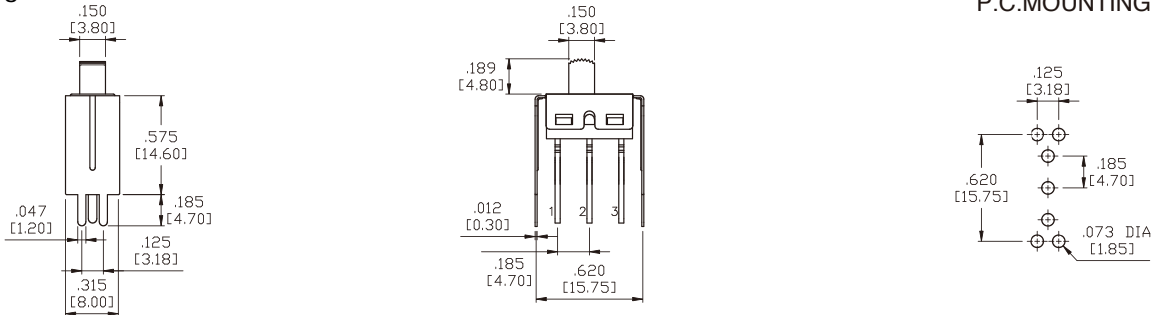
VS2 Single Pole



VS2 Double Pole



VS3 Single Pole



VS3 Double Pole

